

Peripheral Zone

DCE Not as important

PI-RADS Assessment without Adequate DCE

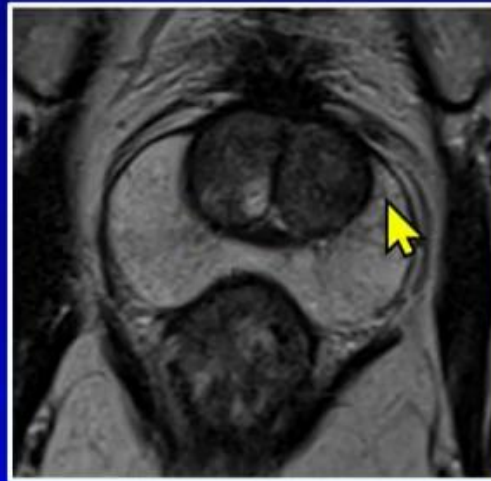
- PZ → DWI
- TZ → T2 + DWI



Peripheral Zone (T2)

PI-RADS Assessment – T2W PZ

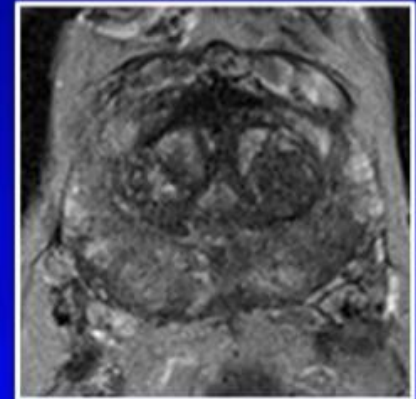
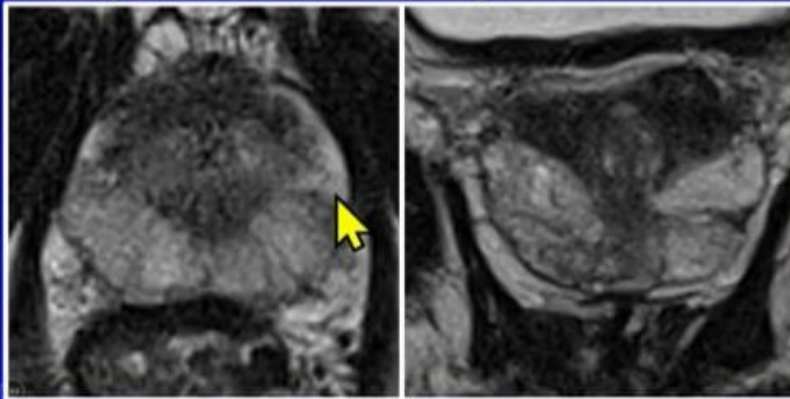
- Score 1:
 - Uniform hyperintense signal



Pi-RADS 2 (T2)

PI-RADS Assessment – T2W PZ

- Score 2:
 - Linear or wedge-shaped hypointensity
 - Diffuse mild hypointensity
 - Usually indistinct margins

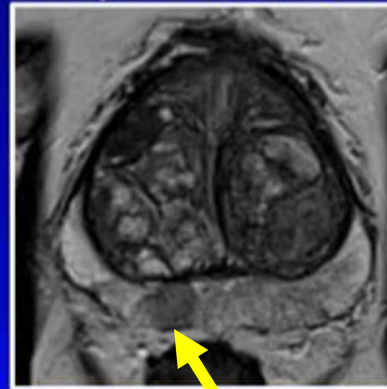
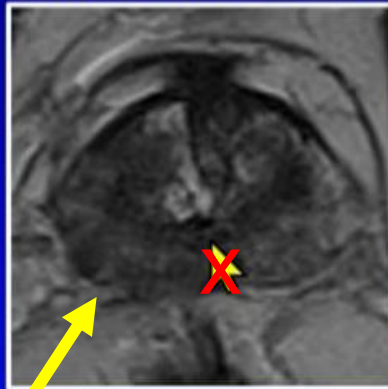


Pi-RADS 3 (T2)

Low signal Becomes more focal

PI-RADS Assessment – T2W PZ

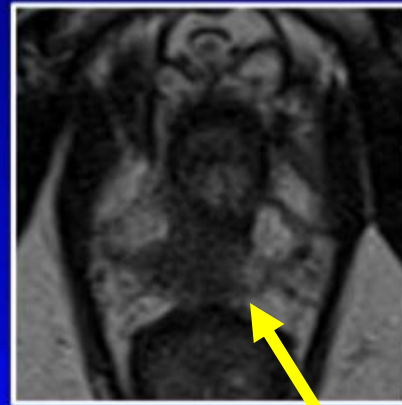
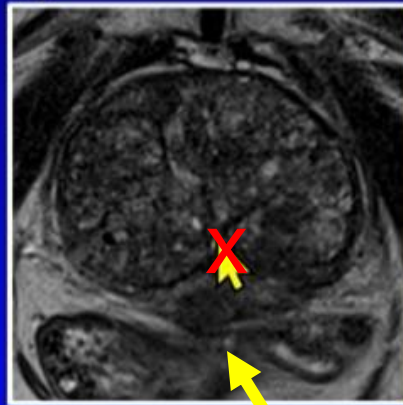
- Score 3:
 - Heterogeneous signal intensity
 - Non-circumscribed, rounded moderate hypointensity
 - Includes others that do not quality as 2, 4, or 5



Pi-RADS 4 (T2)

PI-RADS Assessment – T2W PZ

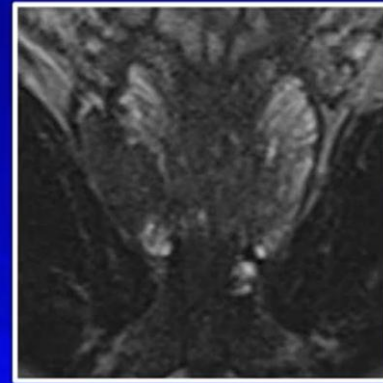
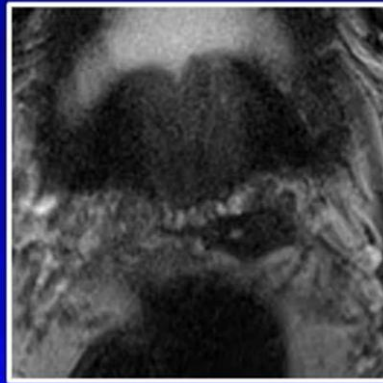
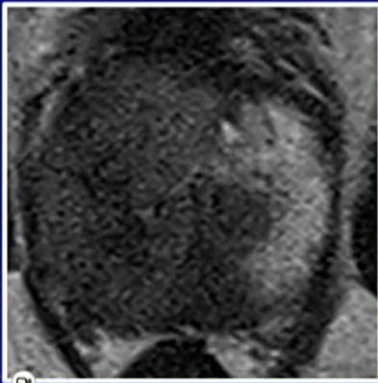
- Score 4:
 - Circumscribed, homogenous moderate hypointense focus/mass confined to prostate
 - <1.5cm in greatest dimension



Pi-RADS 5 (T2)

PI-RADS Assessment – T2W PZ

- Score 5:
 - Same as 4
 - $\geq 1.5\text{cm}$ in greatest dimension or definite extraprostatic extension/invasive behavior



- Only becomes 5, if it was already a (4)
- It is not just based on being $\geq 15\text{ mm}$